



Welcome to

RAYMAN GREEN

We Serve Commitment

GSTIN : 27AESPW5876N1Z2

UDYAM REG No : UDYAM-MH-26-0766330



About Rayman Green

- Established in 2024, based in Pune.
- One-stop solution for solar energy needs: EPC, commissioning, and O&M.
- Dedicated to customer satisfaction and quality service.
- Trusted by residential and commercial customers across Maharashtra.

Why Choose Solar?

- Save on electricity bills.
- Utilize free, renewable energy from the sun.
- Contribute to a greener, sustainable future.
- Increase the value of your property.
- Government subsidies for residential installations (PM Surya Ghar Subsidy).

Our Mission

Committed to a Greener Future

- Deliver innovative and cost-effective solar solutions.
- Ensure efficient and reliable operation of solar power systems.



What We Offer

Tailor-Made Solar Solutions

- **Site Survey & Layout Planning:** Professional assessment for optimal setup.
- **Solar PV Design & Implementation:** Custom designs for maximum efficiency.
- **Turnkey Solutions:** Comprehensive EPC services with financing facilitation.
- **Rooftop Solutions:** Ideal for residential apartments.
- **Maintenance & Monitoring:** Ensure long-term performance.
- **Subsidy Assistance:** Help with government incentives.



Why Rayman Green?

- High-quality materials (solar panels, inverters, cables).
- Customized solutions for all energy needs.
- Ethical business practices ensuring transparency and trust.
- Proactive maintenance for sustained performance.

Our projects in Pune(Residential)



5KW



Waki, Khed



Our projects in Pune(Commercial)



8 KW



**Wagholi,
Pune**



Our projects in Pune(Residential)



4 KW



**Marunji,
Pune**



Our projects in Pune(Residential)



6 KW



Nigdi, Pune



Our projects in Pune(Commercial)



15 KW



Hadapsar, Pune



Our projects in Pune(Residential)



6 KW



Dehu, Pune



Our projects in Pune(Commercial)



30 KW



Bavdhan, Pune

Our projects in Pune(Commercial)



 **25 KW**



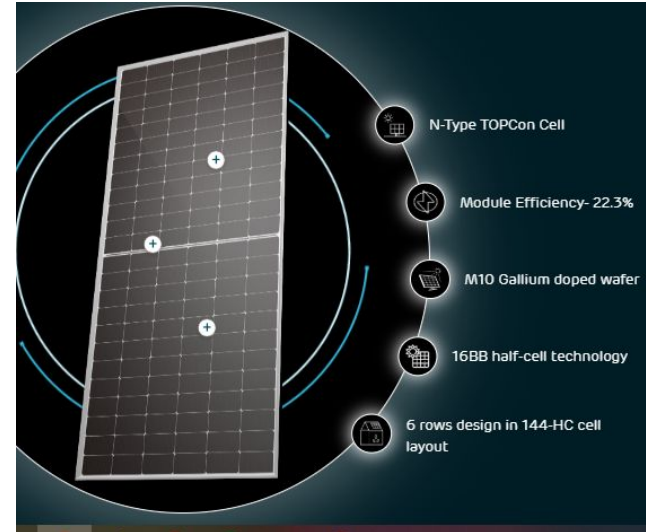
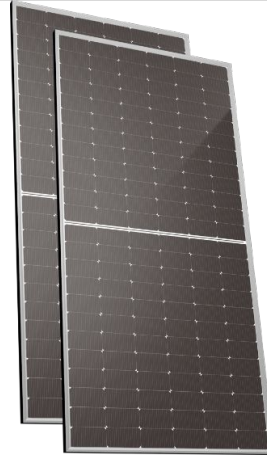
 **Chandannagar, Pune**

- **Waari**
- Adani topcon bifacial
- Adani monoperc
- Pahal
- Navitas
- En Icon
- ECE 545 bifacial dcr

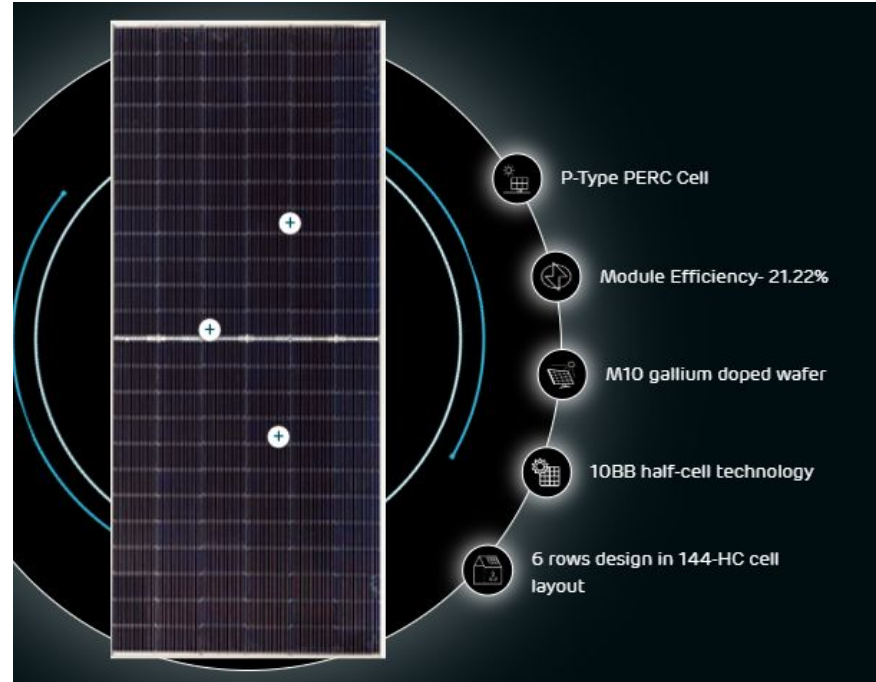


Types of Panels/Modules

- Waari
- **Adani topcon bifacial**
- Adani monoperc
- Pahal
- Navitas
- En Icon
- ECE 545 bifacial dcr



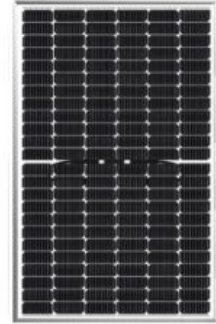
- Waari
- Adani topcon bifacial
- **Adani monoperc**
- Pahal
- Navitas
- En Icon
- ECE 545 bifacial dcr



- Waari
- Adani topcon bifacial
- Adani monoperc
- **Pahal**
- Navitas
- En Icon
- ECE 545 bifacial dcr

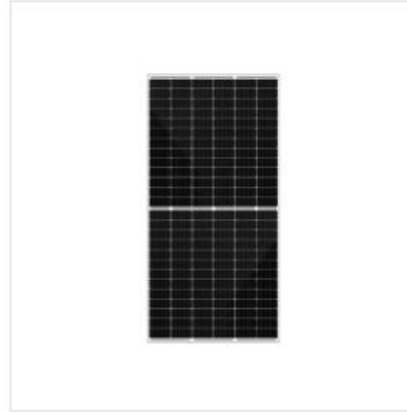


Mono
Crystalline
Panels



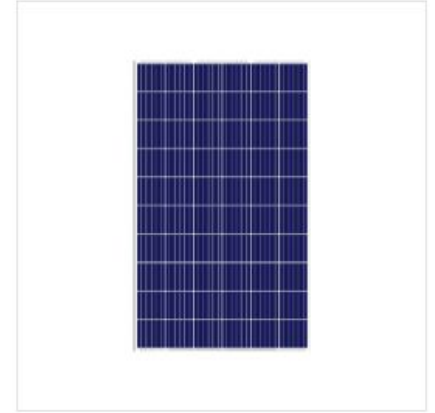
N type Topcon
Bifacial Panels

- Waari
- Adani topcon bifacial
- Adani monoperc
- Pahal
- **Navitas**
- En Icon
- ECE 545 bifacial dcr



Bonito Series

Mono PERC Half Cut Module



Navisol Series

Crystalline PERC Module

Multi Crystalline Solar Modules ranging from 36 to 72 Cells
and Mono Crystalline Solar Modules in 60 and 72 cells

Types of Panels/Modules

- Waari
- Adani topcon bifacial
- Adani monoperc
- Pahal
- Navitas
- **En Icon**
- ECE 545 bifacial dcr

550W



550w
monocrystalline solar
panel,
530w
monocrystalline solar
panel,
440w mono perc
solar panel,
590w mono perc
solar panel dcr,
520w mono perc half
cut dcr solar panel
and
450w mono perc
solar panel.

Types of Panels/Modules

- Waari
- Adani topcon bifacial
- Adani monoperc
- Pahal
- Navitas
- En Icon
- **ECE 545 bifacial dcr**



Types of Inverters

Residential PV Inverter

MIC 750-3300TL-X



MIN 2500-6000TL-X/XH



MIN 7000-10000TL-X/X2



Battery Ready Inverter

MIN 2500-6000TL-XH



[View details >](#)

MIN 2500-5000TL-XA



[View details >](#)

MOD 3000-10000TL3-XH



SPH 3000-6000TL BL-UP

SPH 4000-10000TL3 BH-UP

SPA 4000-10000TL3 BH-UP

- **Growwat**
- Solis
- Luminous
- Ksolare
- Microtek

Types of Inverters



- Growwat
- **Solis**
- Luminous
- Ksolare
- Microtek



NXI Grid Tie Inverter (1kW to 5kW)

- MPPT Maximum Power Point Tracking
- Anti-islanding Protection
- IP65 Protection
- Remote Monitoring System



Solarverter PRO (2 KVA to 5 KVA)

- User Friendly LCD Display
- Max PV Capacity Utilization
- User Settable Priority Modes
- Advanced MPPT Technology

- Growwat
- Solis
- **Luminous**
- Ksolare
- Microtek

Types of Inverters

5G Pro+ Single Phase 1kW-6.2kW

5G PRO+ Single Phase

1 kW - 3 kW 1 MPPT Single Phase



5G PRO+ Single Phase

3.6 / 4.2 kW 1 MPPT Single Phase



5G PRO+ Single Phase

5kW-7kW 2 MPPT Single Phase



5G Pro Three Phase 3kW-25kW

5G PRO Three Phase

5 kW - 7 kW 1 MPPT Three Phase



5G PRO Three Phase

5 kW -12 kW 2 MPPT Three Phase



5G PRO Three Phase

15kW - 25kW 2 MPPT Three Phase



- Growwat
- Solis
- Luminous
- **Ksolare**
- Microtek

Structure

RCC ROOFTOP
MOUNTING
STRUCTURE



Structure

Optimum tilt solar
mounting
structure



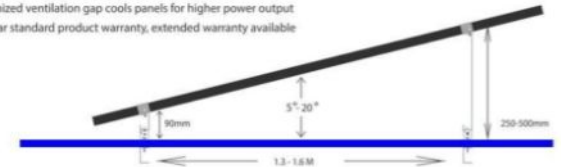
TECHNICAL SPECIFICATIONS

Inclinations : 5°- 20° / Flush with roof
Distribution Load : 4 kg / m²
Orientation Panel : Landscape / Portrait
Panel Type : Framed / Frameless PV module

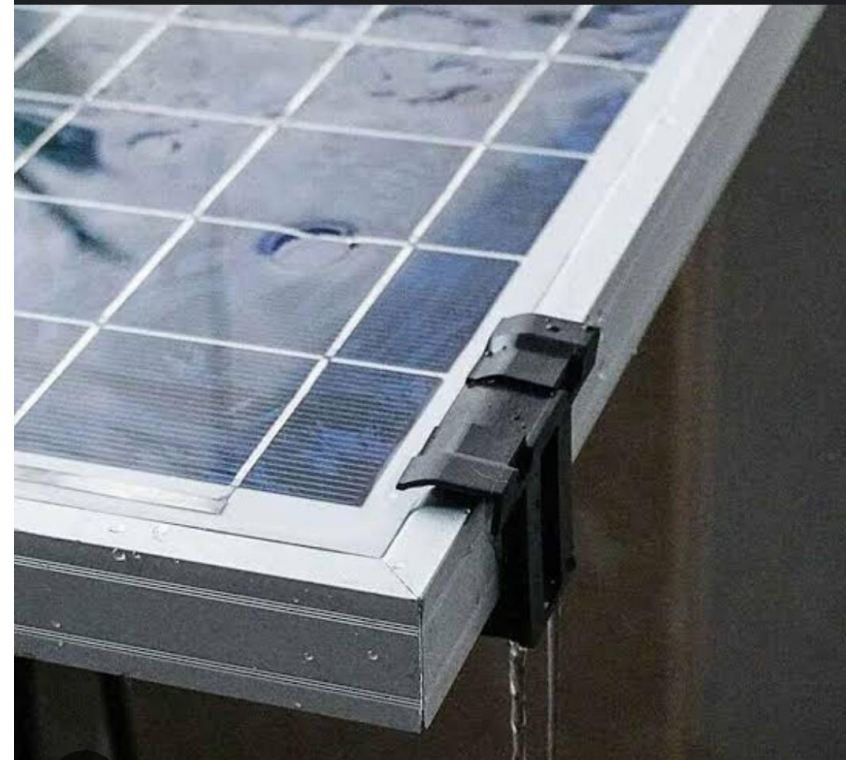
Material : Aluminum, SS304 fastener
Fixing Method : Self Drilling Screw along with EPDM Rubber Washer
Wind Speed : 180 Kmph

FEATURES

- Provides Additional Tilt on east west and North facing Industrial shed(metal sheet) roofs
- High wind and vibration resistance.
- EPDM Sheet Or adhesive for Leak proof solution
- Every size of module array possible
- Light, corrosion-free aluminum components
- Optimized ventilation gap cools panels for higher power output
- 10-year standard product warranty, extended warranty available



Water Draining Clamp For Solar Panel



Water Draining Clamp For Solar Panel



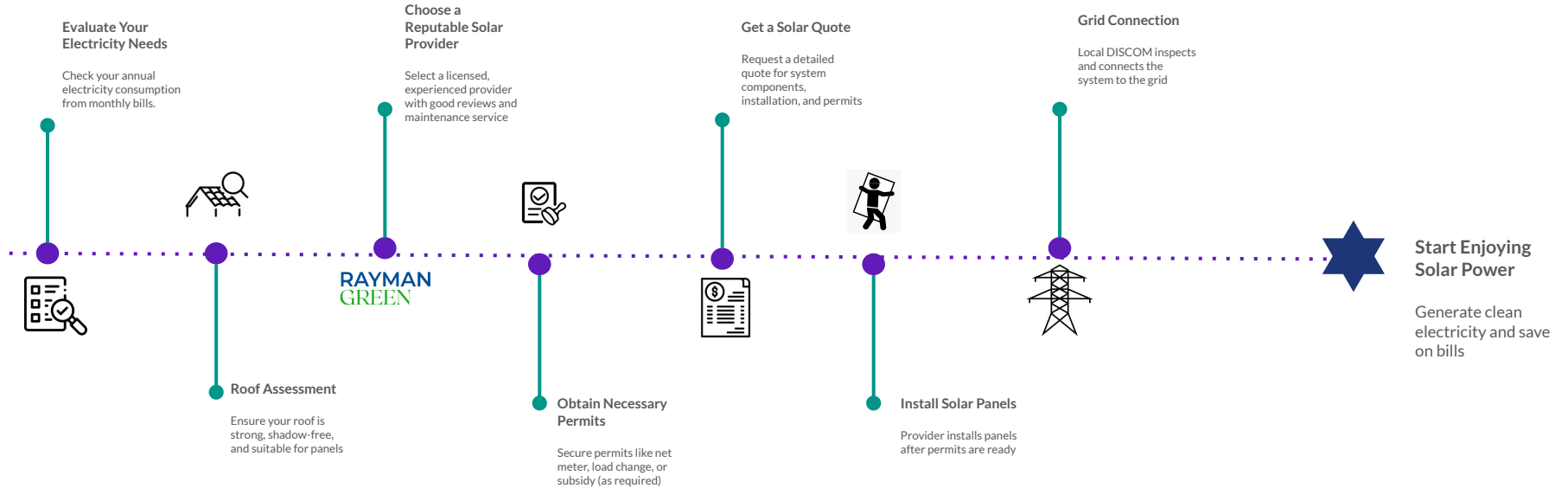


Subsidy Support

PM Surya Ghar Subsidy

- Assistance with applying for government subsidies.
- Significant savings on installation costs.
- Make solar energy affordable and accessible.

Switching to Solar Made Easy





LIST OF DOCUMENTS FOR SUBSIDY FILE



1. Application on Company Letter Pad.
2. Declaration of Vendor
3. Agreement with bank.(Bank Guarantee)
4. UDYAM Certificate.
5. MSME Certificate.
6. TAN & TDS Certificate.
7. GST Certificate.
8. Certificate of Company Registration
9. ISO Certificate.
10. Certificate of Enrolment.
11. IT Return Acknowledgment.(3Years)



Thank You!

RAYMAN
GREEN

We Serve **Commitment**

+91 9404211281

+91 7385964554

www.raymangreen.com

GSTIN : 27AESPW5876N1Z2

UDYAM REG No : UDYAM-MH-26-0766330